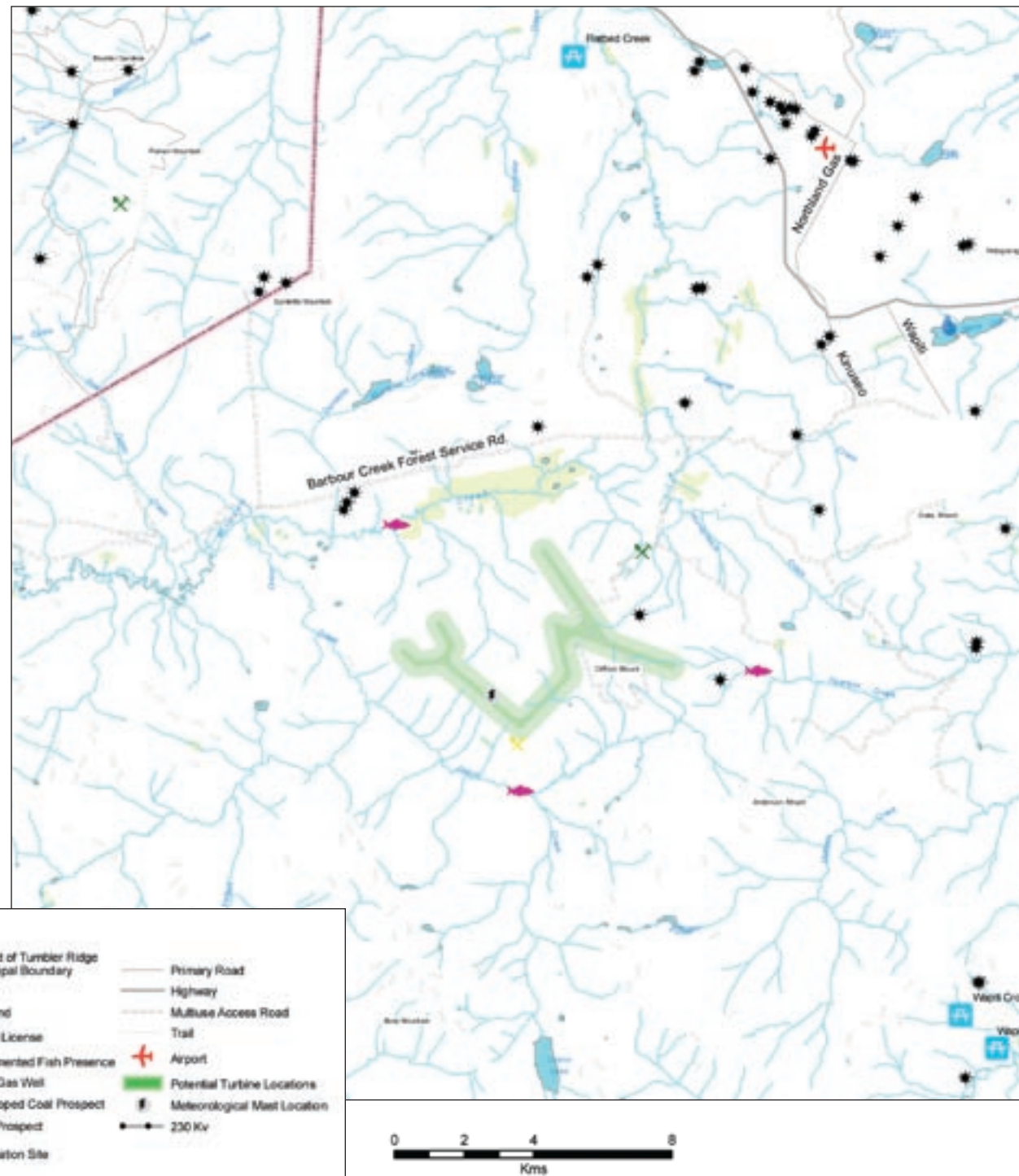


## MOUNT CLIFFORD

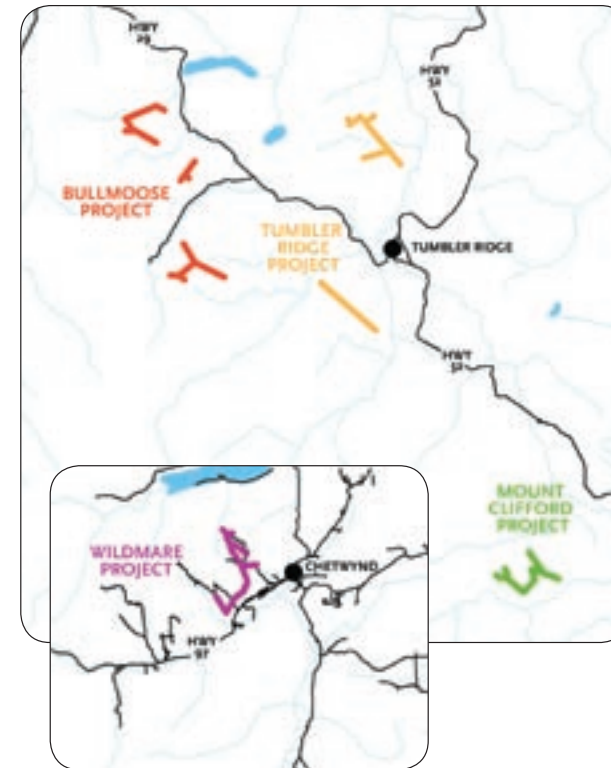
- A proposed 80 MW wind energy project
- The proposed project would consist of approximately 40 wind turbines
- Turbines would be placed on ridge tops located approximately 50 km south of the Tumbler Ridge town centre



## ABOUT THE PROJECTS

### WHERE WILL THE PROPOSED PROJECTS BE LOCATED?

Finavera Renewables has four proposed projects for which we are currently developing concept designs. Three are located near Tumbler Ridge and one is located near Chetwynd. All of the project sites are located on Crown Land and are primarily situated on ridge-tops. Each project will have approximately 35 to 65 turbines. The exact locations of wind turbines have yet to be determined.



- **GOOD ROAD ACCESS** – High-quality access roads are needed to transport and service the turbines. Where possible, wind energy projects use existing roads. Where these do not exist, new roads need to be built.

- **PROXIMITY TO THE POWER GRID** – Wind energy can't be stored. As a result, convenient access to the existing transmission network grid is needed so that the wind energy that is harnessed can be sent to wherever it is needed.

These are the basic criteria in selection of a site. Environmental and socio-community conditions are also considered in determining whether to develop a potential site. The Peace Region has many of these basic requirements and that is why we see a number of potential projects proposed in this region of BC.

### PROXIMITY TO THE COMMUNITY

The following maps illustrate the approximate location of the four projects in relation to Chetwynd and Tumbler Ridge, as well as key road and hydro transportation corridors.

### WE WANT YOUR INPUT

We are currently studying each of the four projects to determine the best location for the wind turbines, access roads and transmission lines. We are also studying environmental components and community values so that we can look for ways to avoid or minimize project impacts.

To date, we have gathered a lot of information. We would like your help to ensure we haven't missed anything. Please take a moment to look at the detailed maps for the projects that interest you and speak with one of our staff so that we can include your feedback in our investigations.

### WHAT MAKES A GOOD WIND PROJECT SITE?

The best sites for the development of wind energy projects have the following features:

- **SPECIFIC WIND CONDITIONS** – Wind turbines start operating at wind speeds of 16km/h (10mph) and reach maximum power output at about 53km/h (33 mph). At very high wind speeds, i.e. gale force winds, (80+km/h or 50+ mph) wind turbines shut down.



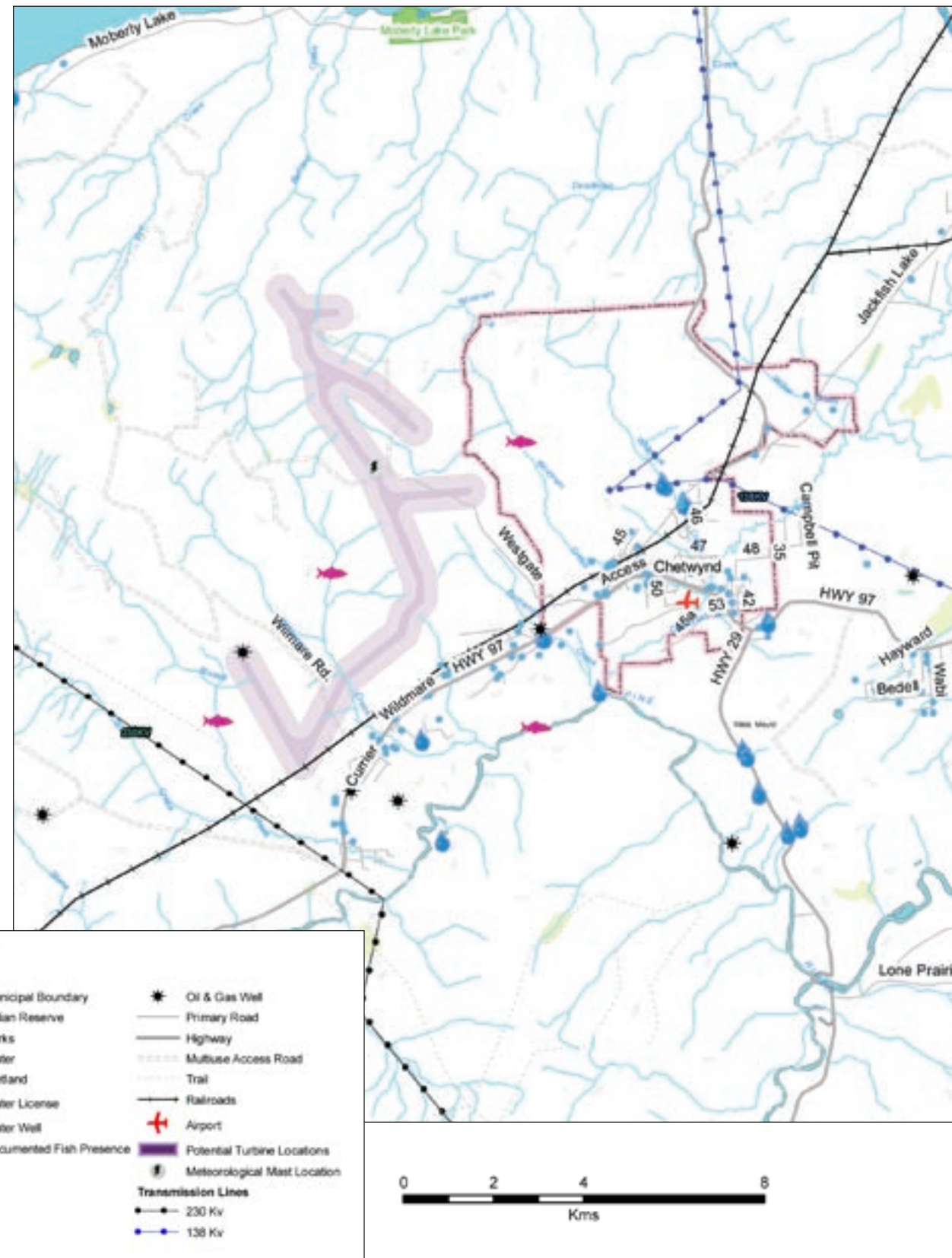
For additional information please go to: [www.finavera.com](http://www.finavera.com)  
Email: [peacewind@finavera.com](mailto:peacewind@finavera.com)  
Or call our information line at: 1-877-280-9051



For additional information please go to: [www.finavera.com](http://www.finavera.com)  
Email: [peacewind@finavera.com](mailto:peacewind@finavera.com)  
Or call our information line at: 1-877-280-9051

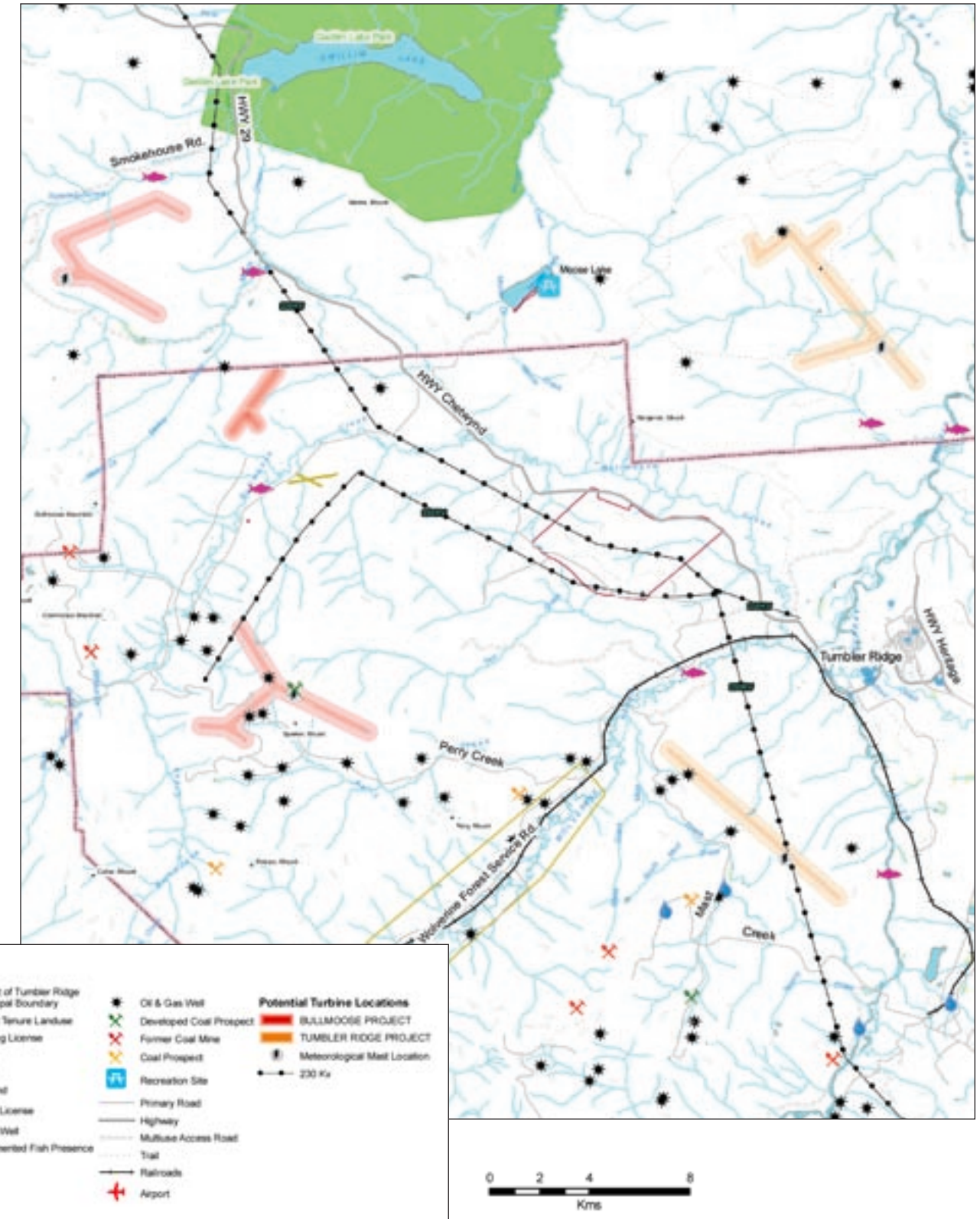
## WILDMARE

- A proposed 74 MW wind energy project
- The proposed project would consist of approximately 37 wind turbines
- Turbines would be placed on ridge tops at least 5 km northwest of Chetwynd town centre



## BULLMOOSE

- A proposed 112 MW wind energy project
- The proposed project would consist of approximately 56 wind turbines
- Turbines would be placed on ridge tops located at least 22 km west and northwest of the Tumbler Ridge town centre



## TUMBLER RIDGE

- A proposed 100 MW wind energy project
- The proposed project would consist of approximately 50 wind turbines
- Turbines would be placed on ridge tops located at least 2.5 km north and southwest of the Tumbler Ridge town centre